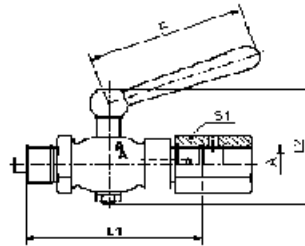
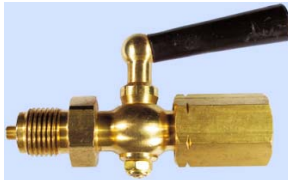


Accessoires de stock

F.T. 35.4400

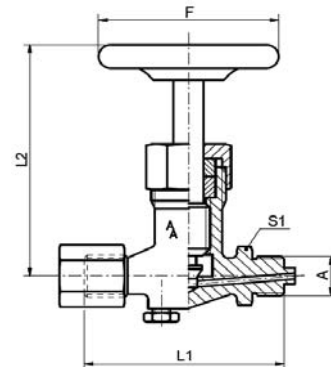
Robinet d'isolement selon DIN 16 262 *



Désignation	N° art.	A	PN / bar	°C max	L1 / mm	L2 / mm	F / mm	S1 / mm	Matériau
Robinet d'isolement	48040604	G1/2"	16	50	80	63	60	27	laiton
	00309860	G1/2"	16	50	80	63	60	27	Ti 316

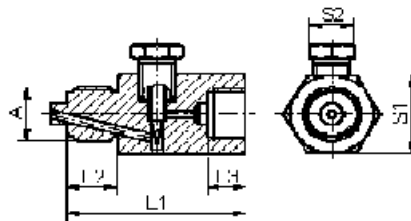
* voir page suivante pour la sélection des joints

Robinet d'isolement selon DIN 16270 avec vis de purge



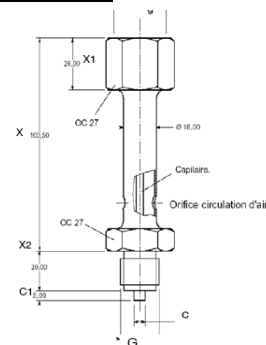
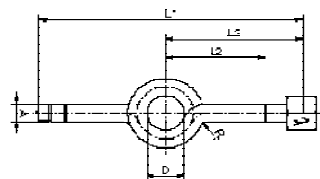
Désignation	N° art.	A	PN / bar	°C max	L1 / mm	L2 / mm	F / mm	S1 / mm	Matériau
Robinet	00447954	G1/2"	250	120	98	100	63	27	laiton

Amortisseur réglable



Désignation	N° art.	A	L1 / mm	L2 / mm	L3 / mm	S1 / mm	S2 / mm	Matériau
Amortisseur réglable	48040611	G1/2"	60	20	18	27	14	laiton
	00310000	G1/2"	60	20	18	27	14	Ti 316

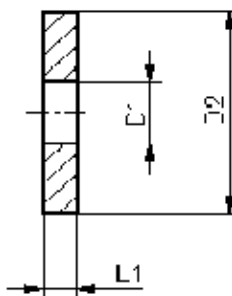
Élément de refroidissement



Désignation	N° art.	A	Forme	D / mm	L1 / mm	L2 / mm	L3 / mm	Matériau
Élément de refroidissement	00447962	G1/2"	C	56	275	95	130	acier
	00447939	G1/2"	C	56	275	95	130	Ti 316
	00082371	G1/2"	ER	OC27	128,5			Ti 316

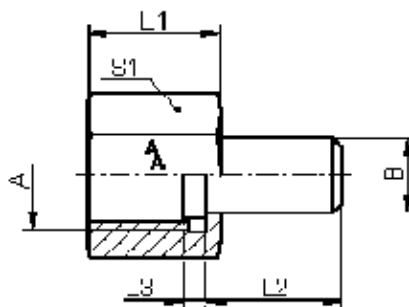
F.T. 35.4400

Joints selon DIN 16258



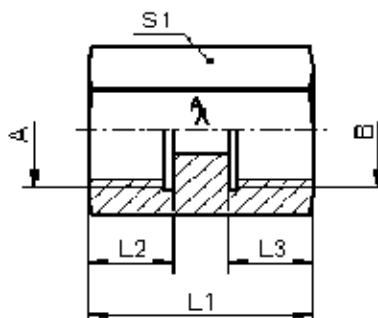
Désignation	N° art.	Raccord	D1 / mm	D2 / mm	L / mm	Matériau
Joints selon DIN 16258	00055240	G1/4"	5,2	9,5	1,5	Cu
	00054765	G1/2"	6,2	17,5	2	Cu
	00427755	G1/2"	5,2	8	1	Teflon
	00447110	G1/4"	6,2	17,5	1,5	Teflon
	00452055	G1/2"	6,5	17	2	1.4571

Raccord tournant avec tenon à souder



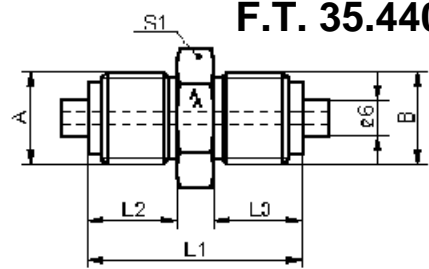
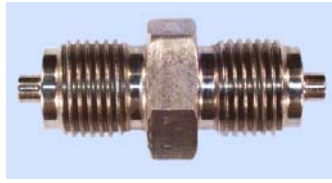
Désignation	N° art.	A	B / mm	L1 / mm	L2 / mm	L3 / mm	S1 / mm	Matériau
Raccord	00447733+00447734	G1/4"	22	6	24	6	17	1.4571
tournant	00447725+00447731	G1/2"	30	12	24	6	27	1.4571

Manchon de serrage



Désignation	N° art.	A	B	L1 / mm	L2 / mm	L3 / mm	S1 / mm	Matériau
Manchon de serrage	48040609	G1/2"	G1/2"	40	16	16	27	1.4571

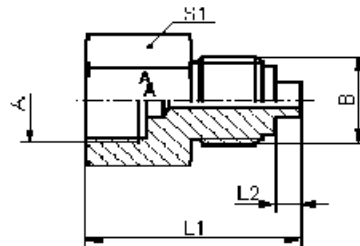
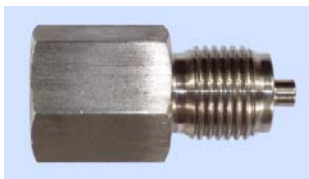
Raccord manométrique Mâle - Mâle



F.T. 35.4400

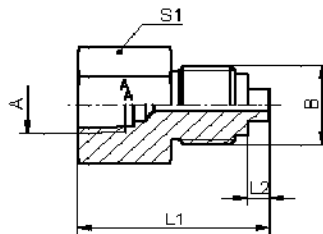
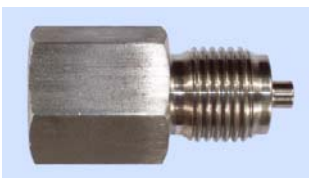
Désignation	N° art.	A	B	L1 / mm	L2 / mm	L3 / mm	S1 / mm	Matériau
Raccord	00464038	G1/4"	G1/4"	34	13	13	14	1.4571
mano. mâle-	00464037	G1/4"	G1/2"	43	13	20	27	1.4571
mâle	00464036	G1/2"	G1/2"	50	20	20	27	1.4571

Raccord G/G



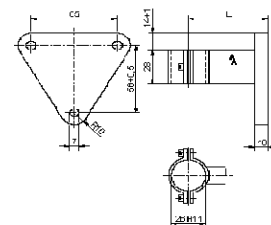
Désignation	N° art.	A	B	L1 / mm	L2 / mm	S1 / mm	Matériau
Raccord G/G	00026268	G1/4"	G1/2"	42	5	24	laiton
	00052964	G1/2"	G1/4"	42	3	27	laiton
	00464030	G1/8"	G1/2"	35	5	22	1.4571
	00060609	G1/4"	G1/2"	42	5	24	1.4571
	00053675	G1/2"	G1/4"	42	3	27	1.4571
	00361827	G3/4"	G1/2"	50	5	36	1.4571

Raccord NPT / G



Désignation	N° art.	A	B	L1 / mm	S1 / mm	Matériau
Raccord NPT/G	00464029	1/2NPT	G1/2"	52	27	1.4571

console de fixation



Désignation	N° art.	L / mm	Matériau
Console de fixation	00056166	100	Aluminium
	00426450	100	Inox